



UMT



ADMISSIONS Guide

GRADUATE PROGRAMS

FALL 2024

Join Pakistan's Premier General Research University

GREAT PLACE - GREAT LEARNING - GREAT FUTURE

Established in
1990

Situated in
Lahore
the Cultural Heart of
Pakistan

60+
Clubs and
Societies

36,000+
Alumni

90+
International
Linkages

91%
Placement in
First Six Months

25:1
Student
Faculty Ratio

85%
Student
Satisfaction

UMT at a Glance

TOP 450

in Asia QS Rankings

TOP 200

in Academic and Employer Reputation

TOP 600

in THE Impact
Ranking 2022

300+

PhDs from Renowned
Universities

60+

Clubs and
Societies

Ranked

W4

University by

HEC

36,000+

Alumni

Situated in
Lahore
the Cultural
Heart of **Pakistan**

Overseas Students
from Over

18 Countries

14

Centers

25:1

Student-Faculty
Ratio

90+

International
Linkages

150+

Degrees

11+

Billion Scholarships Awarded

16

Schools
and
03 Institutes

Established in
1990

200+

Kanal Purpose-Built Campus

40

Departments

Table of Contents

Accomplishments	01	School of Sciences (SSC).....	09
Founder's Message	03	School of Systems and Technology (SST).....	09
President's Message	04	Fee Guidelines.....	09
Rector's Message	05	UMT Student Housing.....	10
Key Highlights.....	06	Campus Life	11
Fee Details		Alumni Community	13
Dr Hasan Murad School of Management (HSM)	07	Top Organizations.....	14
School of Design and Textile (SDT)	07	Facilities.....	15
School of Governance and Society (SGS)	07	Merit-based Scholarships.....	16
School of Law and Policy (SLP)	07	Alumni Scholarships.....	17
School of Engineering (SEN)	07	Other Scholarships and Discounts.....	18
School of Architecture and Planning (SAP)	08	Need-based Financial Aid	20
School of Food and Agriculture Sciences (SFAS)	08	Rules for Scholarships.....	20
School of Liberal Arts (SLA)	08	Scholarship Maintenance Criteria.....	20
School of Commerce and Accountancy (SCA)	08	Shuttle Service.....	21
School of Media and Communication Studies (SMCS)...	08	Important Instructions.....	23
School of Professional Advancement (SPA)	08	Admission Process Flow	24
School of Professional Psychology (SPP).....	08		
School of Social Sciences and Humanities (SSSH).....	08		
School of Pharmacy (SPH)	09		

ACCOMPLISHMENTS



World University
Rankings 2023
Asia

#1 in Private sector
Ranked **116** among top
Asian universities



World University
Rankings 2023
Young

#116th in Asia
100-150 Globally



#1 in private sector
501-600 Globally



#2 in Private sector
601-800 Globally



451-500 Globally
250 in Academic and
Employer Reputation



World University
Rankings 2023
by Subject

Physical Sciences	Social Sciences	Computer Science	Engineering	Business and Economics	Clinical and Health
301 - 400	301 - 400	301 - 400	301 - 400	400 - 500	401 - 500



W4 Category

General Research University

Highest Number

of HEC-Recognized journals
among private universities



13th in Pakistan



Scopus

10th in Pakistan
for publications



20th Globally



1st in Pakistan for
Scientific Research Output



748th globally



4th in the private sector
12th in Pakistan



**HSM - Leading Business
School of Asia**



Nominated for
Workplace of the year



■ Dr Hasan Sohaib Murad

Founder, ILM Trust and UMT

Join us to be great

Why shouldn't you be Great? Even better? Why are you not great? How can you be great? Almost all humans can easily claim to be good, but only a few dream of becoming great, and a very few actually achieve true greatness. Why?

The greatest loss that can happen to a person is the lack of ambition to become great. That is human potential gone unchecked, unharnessed. Then comes the loss of those who become casualty in search of greatness. This is different from failures on the road to become great which turns into only another learning opportunity. Imagine how great a human being can be? How noble and valuable a human being can be? How purposeful and productive? How creative and zestful? How unique and beautiful? How trustworthy and sincere? How crystalline and logical? How passionate and awesome?

University of Management and Technology is here to help you to become great, truly exceptional. The resource persons act first as learners and then let the participants turn into their leaders. There are many good institutions around. Trace the road of the one that can launch you into the orbit of greatness. The one interested in you developing as a whole, a full person, capable of submerging the macrocosm in the microcosm of the self, and defining excellence and refining attributes to the extent that they mirror the pleasure, love, and blessing of Allah. Select an institution which is growing to help you reform your attitude, enlighten your mindset, build your knowledge, develop your application, refine your character, and sharpen your practice.

You walk in with power of intention. You go out with the portfolio of all that it takes to achieve the success here and the ultimate success hereafter. Beyond degree, what determines your future is your invaluable treasure of self-image, enriched and enlightened, driven to life-long learning. Your future is your family's future, your nation's future, your Ummah's future, and your world's future. Infinite possibilities and endless vistas at UMT draw your attention to your own selves and demand that you give to yourself what it deserves the most. Greatness. Help us make you Great!

Dr Hasan Sohaib Murad
Founder, ILM Trust and UMT



■ Ibrahim Hasan Murad

Member Board of Governors
UMT and ILM Trust

Beyond the Human Predicament ...

Human ingenuity is facing unprecedented challenges. It is the victim of its own ascendancy.

This predicament is nowhere more pronounced than in the contingency of nuclear winter, ecological degradation, disruptive technologies, economic disparities, and information cartels.

This asymmetrical state cannot continue ad infinitum.

Time has come for a knowledge revolution, not merely in terms of volume but for a re-orientation of values: global human values.

At this critical juncture in history UMT reiterates its commitment to dissemination of knowledge towards a better human future, globally and equitably.

While upholding free inquiry as an imperative, UMT stands to advance knowledge in consonance with human values. We surmise that value-free knowledge lies at the core of the current human predicament.

Join us in this fascinating exploration of human potential. Collaborate with us in re-orienting the human future.

Ibrahim Hasan Murad
Member Board of Governors
UMT and ILM Trust



■ Dr Asif Raza

Rector UMT

Dear students!

Assalam-o-Alaikum.

It is indeed a pleasure to be leading Pakistan's number 1 private sector university as it continues to gather one laurel after the other and raises benchmarks in the country's higher education sector.

UMT has been around for over 32 prolific years in which the institution has provided invaluable human resources to various industries and economic sectors of Pakistan. UMT journey began with an aim to provide highly skilled professionals that were ready to take on complex roles in organizations. This has been one of the key strengths of UMT, for it has always focused on developing the skills of students for real-time application along with providing them with a solid theoretical base.

The university lays great emphasis on research, which is the core pillar of UMT's progress. At UMT, your learning is not just limited to classrooms and lectures. Here, you will find opportunities to learn in everything you do. Whether you choose to become part of over 60 student clubs and societies, prove your mettle in one of UMT's highly competitive sports teams, or try your luck with UMT TV and UMT Radio, you will find that there is room for learning and improving in everything you indulge in.

Another aspect that makes UMT unique is its enhanced focus on students' spiritual transformation. UMT Grand Masjid is a powerhouse of knowledge and learning that offers various courses and sessions to uplift your soul and spirit.

Besides, you will find ample avenues of interest in UMT's wonderful library, its modern computer and research labs, its startup incubation centers, and other such facilities.

So come visit UMT and experience what a truly modern, premium research university is all about.

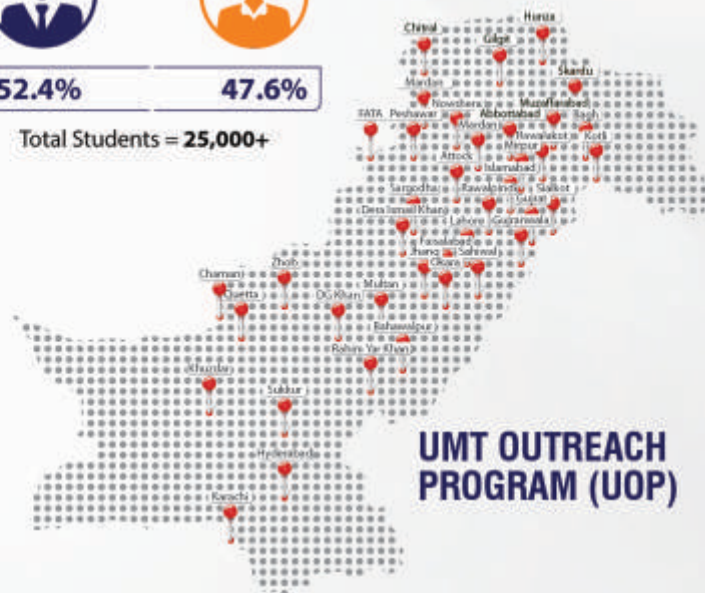
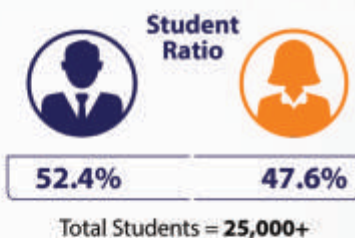
I welcome you to UMT, the number 1 private-sector university in Pakistan.

Thank you!

PhD
Faculty
Members

300+

PKR **11 BILLION**
IN SCHOLARSHIP
29,500+ BENEFICIARIES



**Academic
Alliances**

SAP University
Alliances

ORACLE

IBM

Microsoft
Dynamics

Program Name	Duration (Years)	No of Quarters	Tentative Investment	Quarterly/Half Semester Installment
Dr Hasan Murad School of Management (HSM)				
*PhD Economics	3	12	790000	65833
*PhD Statistics	3	12	790000	65833
*PhD Management	3	12	990000	82500
*PhD Islamic Banking and Finance	3	12	690000	57500
MS Management (Weekend) ★	2	8	790000	98750
MS Economics (Weekend)	2	8	690000	86250
MS Marketing (Weekend) ★	2	8	690000	86250
MS Supply Chain Management (Weekend)	2	8	790000	98750
MS Business Analytics (Weekend)	2	8	690000	86250
MS Finance (Weekend)	2	8	690000	86250
MS Islamic Banking and Finance (Weekend)	2	8	690000	86250
MS Strategic Human Resource Management (Weekend)	2	8	790000	98750
MBA (E) ★ (Marketing, Supply Chain, Finance, Business Analytics, Human Resource Management)	2	8	990000	123750
MBA (M/E) (For BBA or Equivalent) ★ (Marketing, Supply Chain, Finance, Business Analytics, Human Resource Management)	1.5	6	790000	131667
Executive MBA (Weekend)	2	8	790000	98750
School of Law and Policy (SLP)				
LLM	2	8	790000	98750
School of Design and Textile (SDT)				
*PhD Textile	3	12	690000	57500
MS Textile	2	8	590000	73750
School of Governance and Society (SGS)				
MS Public Policy (Regular/Weekend)	2	8	390000	48750
MS Public Policy (For Regular Government Employees)	2	8	349000	43625
School of Engineering (SEN)				
*PhD Civil Engineering	3	12	790000	65833
*PhD Electrical Engineering	3	12	790000	65833
*PhD Mechanical Engineering	3	12	790000	65833
MS Engineering Management (Weekend)	2	8	490000	61250
MS Mechanical Engineering (Weekend) ★	2	8	490000	61250
MS Civil Engineering (Weekend) (Water Resource, Geo Technical Transportation, Structure)	2	8	490000	61250
*MS Electrical Engineering (Weekend) ★ (Power, Electronic & Wireless Communication)	2	8	490000	61250

Program Name	Duration (Years)	No of Quarters	Tentative Investment	Quarterly/Half Semester Installment
School of Architecture and Planning (SAP)				
Master of Architecture (Regular)	2	8	490000	61250
Master of Architecture (Weekend)	2	8	590000	73750
School of Food and Agricultural Sciences (SFAS)				
*PhD Food Technology	3	12	690000	57500
*PhD Human Nutrition and Dietetics	3	12	690000	57500
MS Food Technology	2	8	490000	61250
MS Food Quality Management	2	8	490000	61250
MS Human Nutrition and Dietetics	2	8	590000	73750
School of Liberal Arts (SLA)				
MPhil in Applied Linguistics (Weekend) ★	2	8	590000	73750
MPhil in English Literature	2	8	790000	98750
School of Commerce and Accountancy (SCA)				
MS Accounting (Regular/Weekend)	2	8	590000	73750
School of Media and Communication Studies (SMCS)				
MPhil Media and Communication	2	8	490000	61250
School of Professional Advancement (SPA)				
MS Project Management (Regular)	1.5	6	590000	98333
MS Project Management (Weekend)	1.5	6	690000	115000
School of Professional Psychology (SPP)				
Department of Applied Psychology				
MPhil Psychology	2	8	490000	61250
Department of Clinical Psychology				
*MS Counseling Psychology	2	8	690000	86250
*MS Clinical Psychology ★	2	8	1090000	136250
School of Social Sciences and Humanities (SSSH)				
Department of Political Sciences				
PhD International Relations	3	12	590000	49166
MPhil International Relations (Weekend)	2	8	490000	61250
MPhil Political Science (Weekend)	2	8	390000	48750
MS Security and Strategic Studies (Special Scholarship) (Weekend)	2	8	290000	36250

★ Programs being offered in Sialkot Campus as well.
Admission fee of Rs. 25,000 is non refundable/non transferable.
For further information please see page 10 and 23.

Program Name	Duration (Years)	No of Quarters	Tentative Investment	Quarterly/Half Semester Installment
Department of Education				
MPhil Educational Leadership and Management (Weekend) (Instructional Leadership, Principalship, School Evaluation Quality Management in Higher Education)	2	8	590000	73750
*MPhil Education (Regular/Weekend) (Leadership & Management, Curriculum Studies Assessment & Evaluation, Teacher Education Entrepreneurship in Education, STEM Education Early Childhood Care and Education, Higher Education)	2	8	490000	61250
MPhil Special Education (Weekend) (Intellectual Impairment, Visual Impairment, Hearing Impairment, Physical Impairment)	2	8	490000	61250
Department of Sociology				
MPhil Sociology (Weekend)	2	8	490000	61250
Department of Islamic Thought and Civilization				
MPhil Islamic Thought and Civilization (Weekend) ★	2	8	590000	73750
MPhil Islamic Studies (Specialization in Seerat un Nabi (SAW) (Weekend)	2	8	590000	73750
School of Science (SSC)				
*PhD Physics	3	12	790000	65833
*PhD Chemistry	3	12	790000	65833
*PhD Mathematics	3	12	690000	57500
MS Physics ★	2	8	490000	61250
MS Physics (Weekend)	2	8	490000	61250
MS Mathematics ★	2	8	490000	61250
MS Mathematics (Weekend)	2	8	490000	61250
MS Biochemistry	2	8	649000	81125
MS Biotechnology ★	2	8	649000	81125
MS Chemistry ★	2	8	590000	73750
School of Systems and Technology (SST)				
*PhD Computer Science	3	12	890000	74167
MS Software Engineering (Weekend)	2	8	590000	73750
MS Computer Science (Weekend) ★	2	8	590000	73750
MS Information Technology (Weekend)	2	8	590000	73750
MS Information Security (Weekend)	2	8	590000	73750
MS Data Sciences (Weekend)	2	8	590000	73750
MS Artificial Intelligence (Weekend)	2	8	590000	73750
School of Pharmacy (SPH) Raiwind Road Campus				
MPhil Pharmacology (Hybrid)	2	8	490000	61250

UMT Student Housing

Service Type	Type of Charges	Charges
Admission fee	One time	Rs. 10,000/-
Security (Refundable)	One time	Rs. 5,000/-
Generator Charges	6 Months	Rs. 7,900/-

Service Type	Type of Charges	Charges
* Sharing Room	6 Months	* Rs. 91,900/-
Independent other than Wapda Town	6 Months	* Rs. 177,000/-
Independent Wapda Town	6 Months	* Rs. 212,600/-

Other Charges

Student can use electrical appliances at additional cost to be paid with hostel dues

Air Conditioner	Monthly	As Per Actual Units
Air Cooler	Monthly	* Rs. 4,000/-
Internet Charges	6 Months	Rs. 7,600/-
Hostel Guest Charges	Monthly	Rs. 1,000/- Per Night / Per Person

Contact details for further information

Contact Person Boys Hostel
Muhammad Tayyab
 0306-9458010
 muhammadtayyab@umt.edu.pk
 (LDA Avenue)

Irfan Saeed
 0345-4821489
 irfan.saeed@umt.edu.pk
 (Mustafa Town)

Usman Haider
 0305-1171639
 usman.haider@umt.edu.pk
 (Iqbal Avenue)

Contact Person Girls Hostel
Ayesha Sana Ullah
 0310-4530023
 ayesha.sanaullah@umt.edu.pk
 (Wapda Town)

Asma Fareed
 0302-8352490
 asma.fareed@umt.edu.pk
 (Mustafa Town)

**** Applicable rules and other information will be shared by hostel management**
*** Tentative amount could be changed**

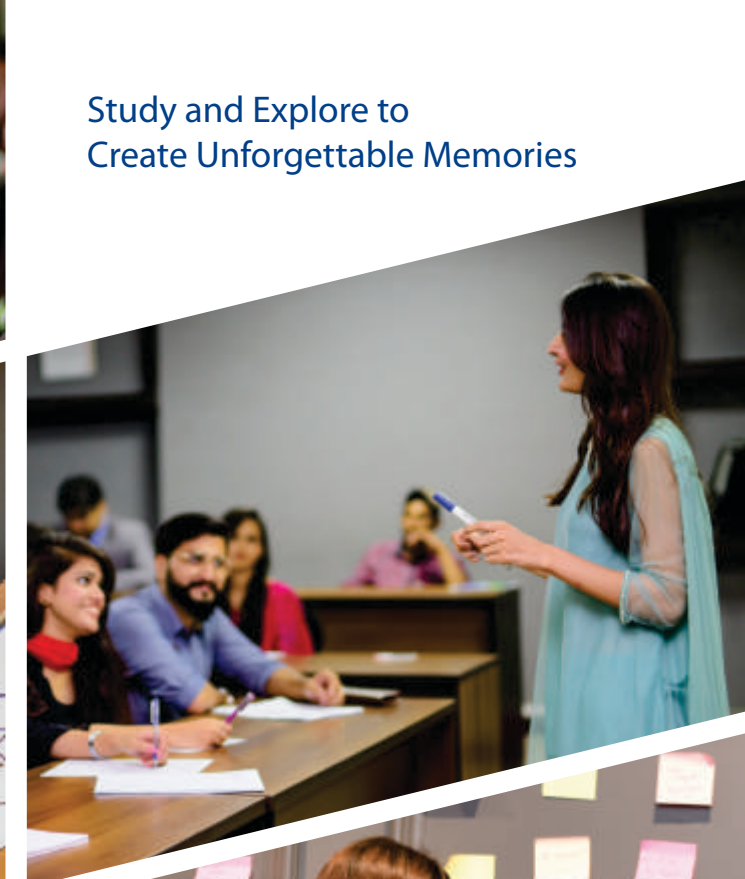
★ Programs being offered in Sialkot Campus as well.

Admission fee of Rs. 25000/- will be charged with first fee installment which is non refundable/non transferable. Thesis/Non-Thesis tracks are being offered in all MS/MPhil Programs.

* PhD dissertation fee would be charged as per UMT policy (details are available with the Office of the Registrar).

For further information please see important instructions at page 23

CAMPUS LIFE



Study and Explore to
Create Unforgettable Memories

EMPOWERED ALUMNI COMMUNITY

UMT Alumni are working in diverse fields across the continents, creating and contributing to a leadership heritage that has become the hallmark of our graduates. They are employed in leading positions in major sectors of industry and have maintained strong links with their alma mater through the Ilmians Network. UMT believes in maintaining long term relationships with its students and this relationship does not end when the courses of study culminate. UMT provides a global support network throughout the life of its alumni.



Alumni Working in
5,000 +
Companies



34+
ALUMNI
NATIONAL CHAPTERS



36,000 +
Alumni Working Around the World



35+
INTERNATIONAL
ALUMNI CHAPTERS



GRADUATES WORKING IN TOP ORGANIZATIONS



CARE THAT NEVER QUITS

UMT believes in offering the best facilities to its students. UMT Campus offers more than an educational and research environment. Students have access to recreation and leisure as well as excellent computing and lab facilities, hostel residency for out of station students, medical unit and a well-maintained and efficient transport service.



Insurance



Wifi



UMT Hostels



Shops



Souvenir Shops



**University
Medical Center**



Parking



Media Production



Daycare



**150+
Classrooms**



**150,000+
Books**



Cafeterias



**1400+
Faculty & Staff Computers**



**110+
Laboratories**



Mosque



**1200+
Computers in IPCs**



Gym



**300,000+
Digital Resources**



Happiness Center

1.0 MERIT-BASED SCHOLARSHIPS

1.1 Merit Scholarships for MS/MPhil Studies

1.1.1 Merit Scholarship for MS / MPhil Studies on the basis of 4 years BS degree (16 years of education) with CGPA

Sr. No.	Academic CGPA	Scholarship
1	3.75 to 4.00	60%
2	3.50 to 3.74	45%
3	3.25 to 3.49	35%
4	3.00 to 3.24	25%

1.1.2 Merit Scholarship for MS / MPhil Studies on the basis of 16-years of education (M.A. / M.Sc. etc.) with percentage marks

Sr. No.	Percentage	Scholarship
1	85.00% to 89.00%	50%
2	80.00% to 84.99%	40%
3	75.00% to 79.99%	30%
4	70.00% to 74.99%	20%
5	65.00% to 69.99%	10%

1.2 Merit Scholarship for PhD Students on the basis of MS / MPhil / 18 Years degree

Sr. No.	Academic CGPA	Scholarship
1	3.75 to 4.00	40%
2	3.50 to 3.74	20%

2.0 Alumni Scholarship Policy

2.1 Alumni Scholarship Policy

This reflects the significance that UMT attaches to its alumni, while upholding and promoting the core values of the University.

- 100% waiver in admission fee
- 100% waiver in admission form fee/admission kit

2.2 Alumni Policy for Admission in MS / MPhil programs on the basis of 2-Year and 4-Year degree

2.2.1 Alumni Policy for Admission in MS / MPhil programs on the basis of 4-Years BS

Alumni of BS programs (4 years) will get a waiver in tuition fee as per following criteria:

Sr. No.	Academic CGPA	Scholarship
1	3.50 to 4.00	65%
2	3.00 to 3.49	50%
3	Up to 2.99	35%

2.2.2 Alumni with two-year degree programs will get 50% waiver in tuition fee if they had a CGPA of 3.00 or more

2.3 Alumni Policy for Admission in PhD Programs

Sr. No.	Academic CGPA	Scholarship
1	3.75 to 4.00	50%
2	3.50 to 3.74	40%
3	3.25 to 3.49	30%

* For deficiency courses fees will be charged according to the terminal degree subject and if the terminal subject is not available then 25% discount will be offered on subject fee.



3.0 Scholarships and Discounts other than Merit and Alumni

3.1 Kinship Policy

- All kin of alumni and existing participants (brother, sister, husband, wife, father, mother, son and daughter) are allowed tuition fee waiver of 20%.
- The kinship fee waiver shall be applicable to new candidate (kin) getting admission and it is not transferable.

3.2 Corporate Group Discount

- 30% waiver in tuition fee of each student for organizations nominating minimum three candidates. The application will be processed through Office of Corporate Linkages and Placements and Head HR of the nominating organization. Any such application shall be considered subject to its submission by the candidate at the time of his/her admission.

3.3 Scholarship for Orphans

- 20% fee waiver for orphan students and 30% for both deceased parents. This scholarship will be given to financially distressed and deserving students after scrutiny of evidence provided by the participant and a brief interview by the committee

3.4 Special Person (Differently-Abled) Scholarship

- All certified special students and those with learning impairment will pay maximum of 50% fee as standard.

3.5 Discount for Children of Shuhada

- This scholarship has been established as an honorary discount of 50% on tuition fee for the children of Shuhada.

3.6 Discount for Children of Government Teachers (up to Scale 16)

- 20% tuition fee waive

3.7 Justice A R Cornelius Scholarship

- These scholarships have been established to pay tribute to a former Chief Justice of Pakistan.
- They are granted to bright Pakistani nationals belonging to the minority communities.
- 30% waiver in tuition fee for Pakistani nationals belong to minorities with minimum 60% marks or equivalent in Intermediate or Graduation.

3.8 Khurram Murad Scholarship

- These scholarships honor a great thinker whose writings and speeches have inspired thousands of young men and women all over the world.
- 50% waiver in tuition fee for two students in a semester, with foreign nationality who fulfill the admission requirements of UMT

3.9 Dr Hasan Sohaib Murad PhD Fellowship Program

- Special scholarship offered to outstanding, young, full-time students for completion of PhD studies in a period of 3 to 4 years in specific areas of specialization.

3.10 Scholarship Policy (Hazrat Khalid Bin Waleed R.A.) for MS Security and Strategic Studies

- 50% waiver in tuition fee for students from Armed Forces / Govt. Services of Pakistan who fulfill the admission requirements of UMT

3.10.1 In Case of CGPA

Sr. No.	Academic CGPA	Scholarship	Scholarship Type
1	3.75 to 4.00	40%	Hazrat Khalid Bin Waleed R.A.
2	3.50 to 3.74	30%	
3	2.50 to 3.49	Rs. 50,000/-	

3.10.2 In Case of Annual System percentage

Sr. No.	Academic CGPA	Scholarship	Scholarship Type
1	90% and above	40%	Hazrat Khalid Bin Waleed R.A.
2	80% – 89.99%	30%	
3	50% – 79.99%	Rs. 50,000/-	

3.11 Experience Based Scholarship

- Scholarship for MS/M.Phil. Candidate with a Professional / Industrial experience with minimum 5 years.

Sr. No.	Experience	Scholarship
1	10 Years and Above	30%
2	7 Years and Above	25%
3	5 Years and Above	20%

4.0 STUDY NOW PAY LATER

ILM Scholarship Fund for MS/MPhil Students

This Study Now Pay Later scholarship is given to financially distressed and deserving students, after scrutiny of evidence provided by the participant and a brief interview. The scholarship/fund is treated as Qarz-e-Hasna which participant has to return in three years installments.

It facilitates participants to study first and pay later. 50% amount will be paid during 2 years of degree and the remaining amount will be adjusted after completing the degree in extending tenure of 1 year. Criteria to maintain the scholarship is 2.50 CGPA.

For details and to apply for ILM Scholarship please visit: www.ilm.fund

5.0 RULES GOVERNING SCHOLARSHIPS AND FINANCIAL AID

Criteria for Continuing Fee Waiver through Merit / Non-Merit for fall 2023 Onward Batches

1.1 All kinds of discounts, waivers, scholarships and financial aid are applicable to tuition fee only.

1.2 Admission and Library fees are not refundable in any case.

1.3 Reinstated scholarship will not be applicable to all MS/MPhil level programs.

1.4 Minimum CGPA requirement criteria to continue fee waiver granted through

Non-Merit Scholarships for MS programs is 3.00

1.5 Scholarship can be reinstated one time in all BS Level Programs. It will not be applicable to all MS/MPhil Level Programs.

Merit Scholarships Maintenance Criteria



All MS Level Programs	Maintaining CGPA
60%	3.80
50%	3.75
40%	3.50
30%	3.35
25%	3.25
20%	3.20
10%	3.00

1.6 Criteria for Continuing Fee Waiver through Merit / Non-Merit for PhD Programs is tabulate below:

Experience	Criteria
PhD	Minimum CGPA 3.25 Required

SHUTTLE SERVICE



Route No.	Timings	Areas
1	Pick up: 6:30 am & 9:00 am Return: 4:40 pm & 7:10 pm	Askari-10, D. Chungi, Guldast Town, Pepsi Stop, Jorrey Pul-PSO, Murghi Khana, Askari-9, Askari-1, Sadar Cantt, Dharampura, Mall Road Underpass, Shah Jamal, Punjab University (Gate no. 15), UMT
2	Pick up: 6:30 am & 9:00 am Return: 4:40 pm & 7:10 pm	Askari 11 Sector C, Askari 11 Sector B, Askari 11 Sector A, Nawaz Sharif Interchange, KFC, Wateen Chowk, LUMS University, Lalik Chowk Ghazi Road, PSO Pump, Usman Store, Bhutta Chowk Health Bridge Hospital, Bata Shoes, Toyota Showroom, Eden Avenue, Chishti Street Soling, Waqas Market Soling, Soling Airport, Nishat Army Checkpost, Fauji Foundation Hospital, Solider Mess, Aaray Bazaar, Shami Road Cavalry, Shell Pump, Siddique Centre, Main Market Gulberg, Liberty Market, Centre Point, Barkat Market, UMT
3	Pick up: 6:30 am & 9:00 am Return: 4:40 pm & 7:10 pm	Warha Gujjar, Al-Raheem Garden, K.C. Colony, Code Wala Piya, Sotar Mill, Yaadgar, AL-Hamd Garden, Manawa, Bismillah Housing Scheme, Kothi Stop, Rehman Pura, Kot Abdullah, Bata Gate No. 3, Jallo Park Nehr, Sky Land, Rizwan Garden, Nazir Garden, Medical Housing Scheme, Diyal House, Hajveri Scheme, Harbanspura, Phattiyan Wali Puli, Taj Bagh, Azeez Puli, Fateh Garh, Naya Pul, Panj Peer Darbar, Laal Pul, Jaffery Puli, Mughalpura, UMT
4	Pick up: 6:30 am & 9:00 am Return: 4:40 pm & 7:10 pm	Central Park, Purana Kahna, Kahna No. 5, Kahna Thana, Haji Workshop, Alhu Wala Raah, Gajjumata, Dolum Stop, Yohanabaad, Nishtar Colony, Pak Arab, Awaan Market, Bank Stop, Chungi Amar Sadhu, General, Qainchi Amar Sadhu, Phatak, Phatki Choti, Kot Lakhpat Station, Peco Mor, Treat, Pindi Stop, Link Road, UMT
5	Pick up: 6:30 am & 9:00 am Return: 4:40 pm & 7:10 pm	Shahda Mor, Batti Chowk, Kasurpura, Ameen Park, Gandhian Bambiyani, Munshi Hospital, Chohan Road, Chota Sandha, WASA Mor, Gulshan Ravi Moon Market, Mor Samnabad, Bastami Road, Yateem Khana Chowk, Scheme Mor, Shah Noor Studio, Bijli Ghar, Kharak Nala, Awaan Town, Multan Chungi, UMT
6	Pick up: 6:30 am & 9:00 am Return: 4:40 pm & 7:10 pm	Mustafa Town Hostel, Ali Hospital Thokar, Thokar Canal Checkpoint, Eden Canal, Muhafiz Town, EME, PND, Iqbal Avenue, Nespak, Izmir Town, Chung Puli, Tricon Village, Shakaam Chowk, Canal Garden, Main Gate Canal Bahria Town, Surahi Chowk, Talwaar Chowk, Bahria Safari Gate, Dream Garden, Labor Colony, LDA, Shaukat Khanam Chowk, UMT
7	Pick up: 7:00 am & 9:00 am Return: 4:40 pm & 7:10 pm	Badami Bagh, Data Darbar, Katchery, Sector Treat Stop, MAO College Stop, Chaburji Stop, Qurtaba Chowk Stop, Shama Stop, Ichra Stop, Muslim Town Mor, Aabpara Market, Naqsha Stop, Bhakey Wala Mor, Raza Block, Kareem Block, Jinnah Hospital, UMT
8	Pick up: 6:30 am & 9:00 am Return: 4:40 pm & 7:10 pm	Daroghay Wala, Dhobi Ghaat, Akhri Minute Gate, Suk Nehr, Shalamar Bagh, Shalimar Hospital, Angoori Cinema, Shalimar Chowk, Ghass Mandi, Barf Khana, Singh Pura, Begumpura, UET, Cup Store, Doctor Maqsood, Station, Haji Camp, Lahore Hotel, Lakshmi Chowk, Dunya News, Queen Merry, Garri Shahu, Police Station, Asif Center, Campus Gate, UMT
9	Pick up: 6:30 am & 9:00 am Return: 4:40 pm & 7:10 pm	Paragon City Gate 1, Paragon City Gate 2, Air Avenue, DHA Phase 8, DHA Phase 7, Phase 6 Head Office DHA, KFC DHA 5, Wateen Chowk, LUMS, Lalik Jan Chowk, Masjid Chowk, Adil Hospital DHA, Defence Mor, Toyota Showroom Walton Road, Packages Mall, UMT



NOTE:

- Bus charges will be Rs. 11,690/- per month (Only Payable in Accounts Office)
 - Bus charges from main campus to SHS raiwind road campus will be 4,390/- per month (Only Payable in Accounts Office)
 - UMT reserves the right to change bus charges according to variation in fuel charges
 - UMT Shuttle Service Card could be obtained from 1st to 3rd of each month
 - Anyone travelling without valid "Transport Card" will be fined as per policy
 - In case of any complaint, suggestion, or feedback, please feel free to contact **Rehan Ali Khan: 0300-4431979**
 - For queries about timing, schedule, and routes, please contact **Muhammad Rasheed: 0302-3793545**
- UAN: 042 111 868 868 - EXT: 6092**

LAHORE



Areas:

AA Block, Aaq Marriage Hall, Abpara Market, Adil Hospital Chowk, Akbar Chowk, Allah Hoo Chowk, Allama Iqbal Road, Ameen Park, Askari-1 Check Post, Askari-10, Askari-11, Askari-9, Azam Garden, Azmir Society, Badami Bagh, Bank Stop, Bhakey Wal Mor, Bhatta Chowk, Bhutian Chowk, Boharwala Chowk, Canal View, Cavalry Ground, Center Point, Charrer Pind, China Chowk (Aiwan E Sanat O Tijarat), Chouburji, Chungi Amar Sidhu, City Tower, Civil Secretariat, COMSATS, Cooper Chowk, D. Chungi, Darogha Wala, Data Darbar, Defence Morr, Dharampura, Doctor Hospital, EME Society, Fateh Garh, Firdous Market Chowk, G.P.O, Gajjumata, Garhi Shahu Bridge, General Hospital, Gillani Road, Governor House, Guldasht Town, Gulshan-e-Ravi Moon Market, Haji Camp, Hakim Chowk, Harbanspura, H-Block, Hockey Stadium, Hostel, Ichhra, Jinnah Hospital, Jorrey Pul, Kahana, Kahana, Kalma Chowk Underpass, Kalma Chowk, Karim Block Market, Kasurpura, Katchery, Khalid Chowk, Khokhar Chowk, Kory Stop, Kot Lakhpatt, Lady Willingdon Hospital, Lakshmi Chowk, Lal Pul, Lalik Chowk, LESCO, Liaquat Chowk, Liberty Chowk, Lorry Adda, LUMS, Manawa Mandi G.T Road, Mansoor, MAO College, Marrian Stop, Masjid Chowk, Model Town, Mozang, Mughalpura Canal, Multan Chungi, Muqadas Park, Murghi Khana Stop, Muslim Town Morr, Naqsha Shop, Niazi Chowk, Nishtar Park APS, Nishtar Colony, Officers Colony, Peco Morr, Pindi Stop Link Road, PSO Pump, PTCL Exchange, PTV Station, Qainchi Morr, Rahim Store, Railway Station, Ranger Headquarters, Sadar Roundabout, Sagian Pull, Salman Dawakhana Opp. PSO Station, Sanda, Scheme Morr, Services Hospital, Shadiwal Chowk, Shadman Chowk, Shah Freed CNG, Shakkam Chowk Bahria Town, Shakkam, Defence Road, Shalimar Bagh Chowk, Shalimar Hospital, Shalimar Stop opp. Shalimar Hospital, Shama, Shimla Pahari, Shouq Chowk, Siddique Trade Center, Singh Pura, Thokar Niaz Baig, Toyota Walton Show Room, UET, Valencia Bypass Road, Valencia Roundabout, Valencia Town, VIP Store, WAPDA Town, Wateen Chowk, Y Block

Important Instructions

1. Fee is to be submitted in mentioned Bank as per voucher issued to you
2. Admission fee of Rs. 25,000/- will be charged with first fee installment
3. The cost of one admission form is Rs. 2,000/-
4. No admission fee and form fee for UMT alumni
5. Admission form once bought is non refundable/non transferable
6. The program fee can be revised during the degree program
7. Program change requests are entertained before submission of fee. After submission of fee, program change requests will be processed by Registrar Office, along with program change fee of Rs. 5,000/-
8. If you repeat any course then the fee will be charged according to the semester in which you enrolled
9. In case of deficiency courses, additional fee will be charged
10. Semester registration fee will be charged Rs. 5,000/- for every semester
11. Above fee structure does not includes any govt taxes. Taxes will be charged u/s 236 I of income tax ordinance
12. The tax will be charged to the students with the annual fee of more than Rs. 200,000/-
13. Admissions office reserves the right to cancel any admission without serving any reason at any stage of admission process based on instructions/rules and regulations laid by the concerned Department/Dean/Governing body
14. **University will not tolerate any act of improper, bad, or rude behavior with its staff. Admission of the Students/Applicants will be canceled immediately if they or their relatives will misbehave or harass any staff member of the university**

Refund Policy

UMT follows the National Fee Refund policy of the Higher Education Commission of Pakistan. Under this policy Admission Fees is Not Refundable. Only tuition fee may be refunded according to the following schedule:

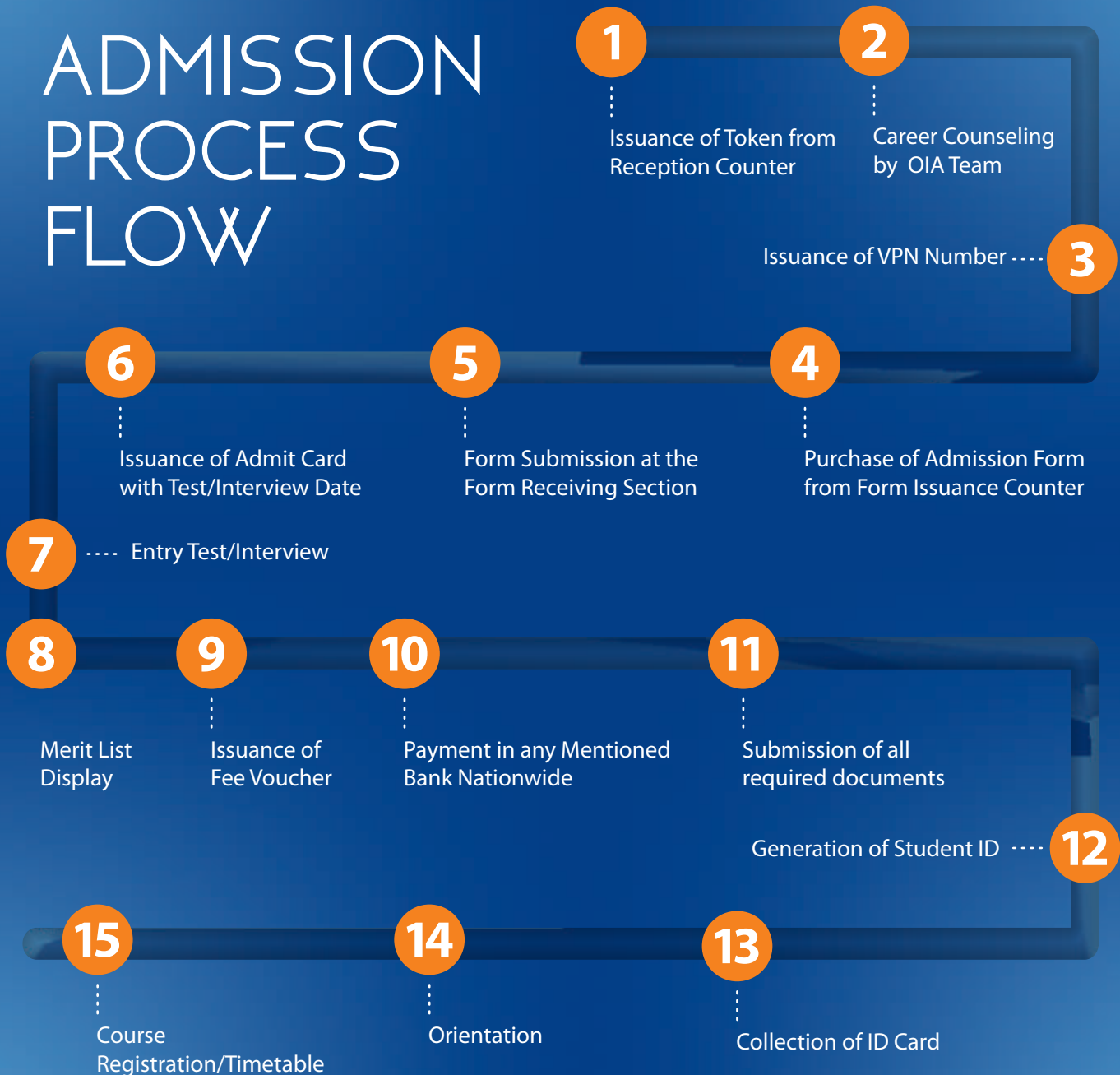
- 100% tuition fee may be refunded within 1st week of commencement of classes
- No tuition fee will be refundable after 1st week of commencement of classes
- 10,000 will be deducted as refund processing fee

Due Date of Quarterly/Half Semester Installment:

1	On or before 1st March	Spring Semester
2	On or before 1st June	
3	On or before 1st September	Fall Semester
4	On or before 1st December	

The university reserves the authority to change the curriculum, rules and regulations, fees, and admission/other requirements affecting participants without prior notice, if necessary.

ADMISSION PROCESS FLOW



* Online application form is available at admissions.ugt.edu.pk



UMT

Lahore Campus: UMT Road, C-II Johar Town, Lahore - 54770, Pakistan

Tel: +92 42 35212801-10, **Email:** admissions@umt.edu.pk

Sialkot Campus: 21-A, Small Industrial Estate, Shahabpura Road, Sialkot.

Tel: +92 52 3256964, +92 52 3241801-10, **Email:** info@skt.umt.edu.pk, **Web:** skt.umt.edu.pk

UAN: 042 111 868 868



www.umt.edu.pk















































































































































































































































































































































